

Carbon Capture Facility, Protos

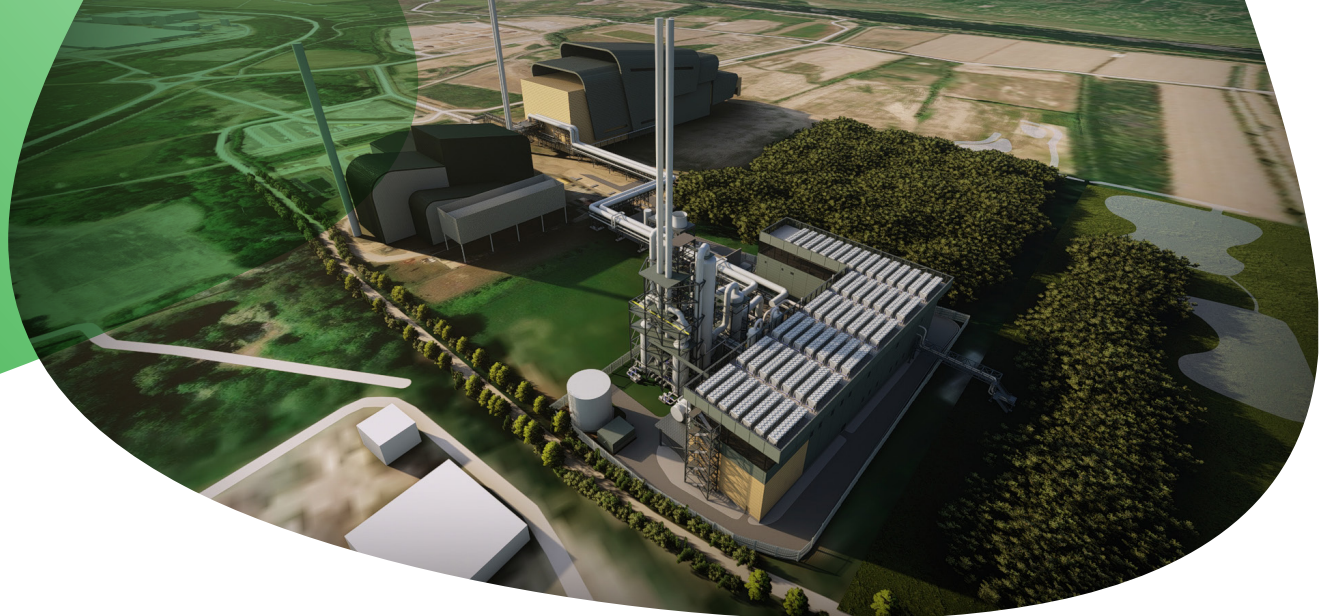


Image courtesy of Weedon Architects

First-of-its-kind sustainable project

CLIENT

Biffa Waste Services /
Encyclis Limited

LPA

Cheshire West and Chester
Council

STATUS

Live application

SERVICES

Planning, EIA, Heritage,
Sustainability and ESG,
Landscape & VIA, Economics,
Strategic Communications

Our role

- On behalf of a joint venture between Encyclis Limited and Biffa Waste Services Limited, we are supporting the development of a Carbon Capture Facility associated to the Protos energy from waste facility.
- We are commissioned to co-ordinate a multi-disciplinary team in the preparation of the planning application and EIA including drainage, biodiversity, landscape and visual impact, climate change, noise and air quality. A bespoke consenting strategy has been prepared ensuring alignment between the planning and EIA workstreams.

Results

- The project has been identified by UK Government as one of eight industrial carbon capture projects to proceed to the due diligence stage of the Track 1 (Phase 2) Cluster Sequencing Process and will export captured carbon to the HyNet carbon capture, transportation and storage project.
- The project will be one of the first-of- its-kind to work through the Town and Country Planning Act process.

Turley