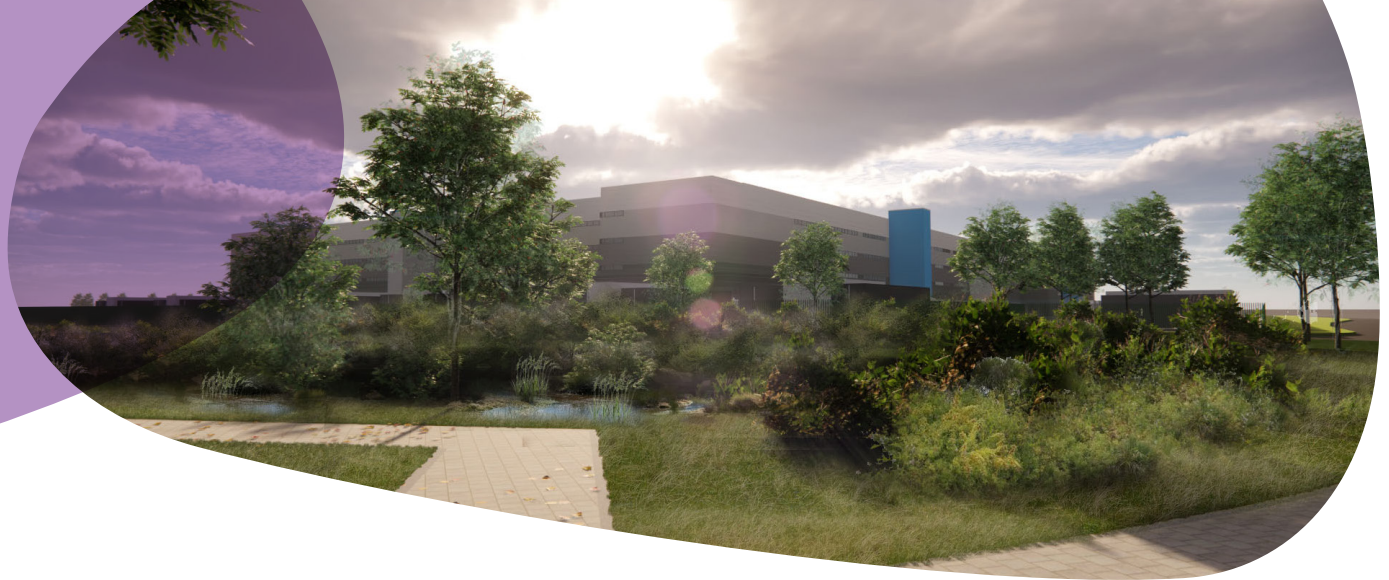


Peddimore, Birmingham



A new economic asset for Royal Sutton Coldfield and Birmingham

CLIENT

IM Properties Plc

LPA

Birmingham City Council

STATUS

Planning permission granted

SERVICES

Planning, Heritage and
Townscape, Economics,
Sustainability, EIA

Our role

- Turley supported IM Properties Plc in their successful tender to act as Birmingham City Council's development partner.
- Since March 2018, our Planning and EIA teams have co-ordinated and managed a multifaceted consultant team to submit a complex hybrid planning application, with planning permission granted in summer 2019.
- Our Sustainability and Economics teams led on a bespoke social value study to capture the way in which Peddimore will generate social value through local employment, buying local and securing partners in the community.
- In addition, our Sustainability team established the strategy for creating low carbon buildings and delivering BREEAM certification.

Results

- Peddimore will comprise best in class employment development, delivered through a landscape-led masterplan with high sustainability standards.
- It will address the needs of international, national and regional businesses in the industrial and logistics sectors.
- The development will deliver extensive socio-economic and environmental benefits, including the creation of thousands of jobs, a significant uplift in productivity across the West Midlands, health improvements associated with increased work and training, enhancements to biodiversity and access to open space and nature routes.

Turley