

Expertise in delivering

# Net Zero Infrastructure



**Turley**



# Introduction

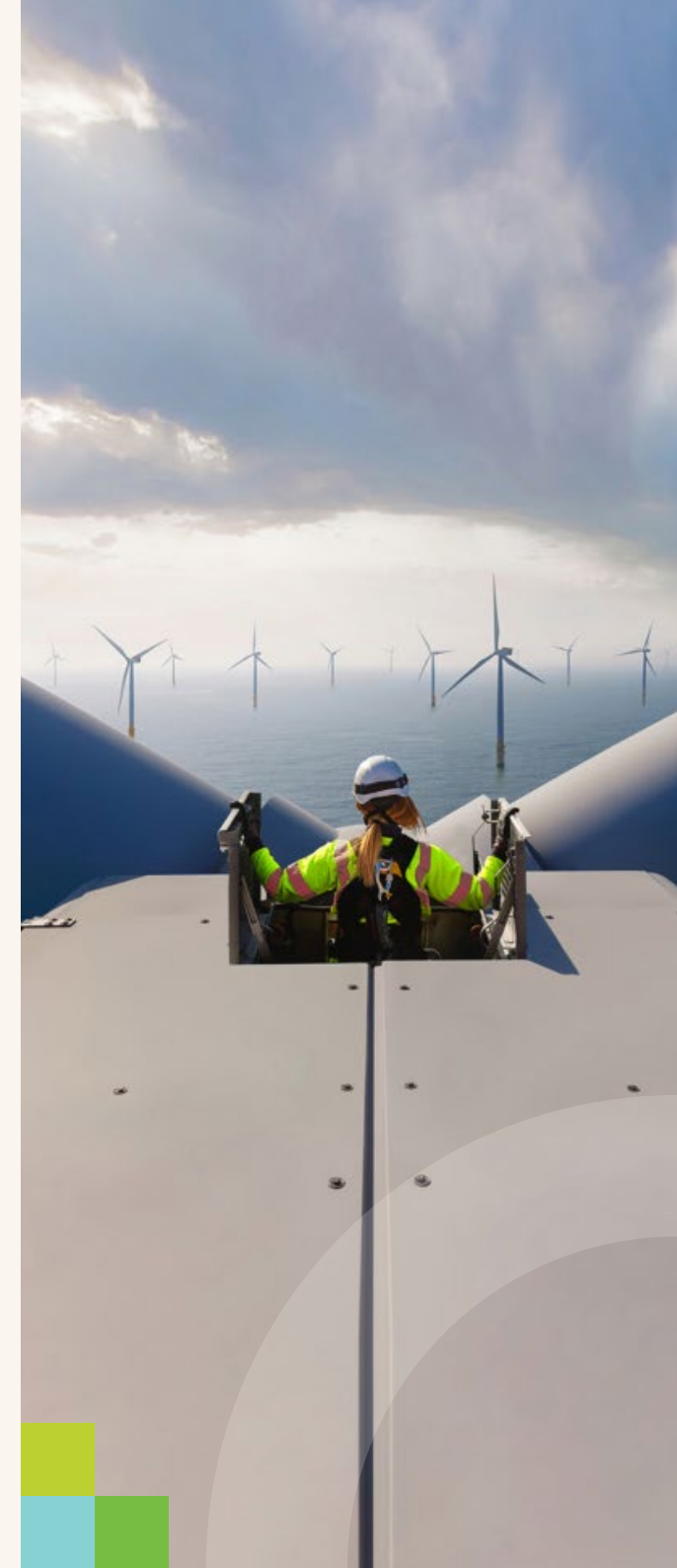
Climate change, decarbonisation and ensuring national energy security are defining issues for our future.

The UK and Ireland have a legal obligation to be 'net zero' by 2050. Delivering new and upgraded infrastructure quickly and effectively is critical.

We have been advising our clients on renewable energy generation, storage and industrial decarbonisation projects for over 40 years and we are ideally placed to support the industry as the necessary scale of change continues to increase exponentially.

Working across the UK and Ireland and engaging with all relevant consenting regimes, under the Town and Country Planning Act (UK), Planning Act (UK) and Planning and Development Act (Ireland), our projects have included:

- One of the **first onshore wind farms** to be promoted since removal of the de-facto ban in England.
- The **first bio-ethanol production plant** to be consented in the UK and Ireland.
- One of the **first floating offshore wind farm** projects in the UK and Ireland.
- Trailblazing projects associated with carbon capture and storage (CCS), including one of the **first pilot projects for CCS** at a conventional power station and one of the **first projects to capture carbon emissions from an energy-from-waste facility**.
- An EU funded research project for **hydrogen production**.
- The **world's first airport connected sustainable aviation fuel (SAF)** production facility.
- Key infrastructure project **connecting energy parks to the national grid**.



# About Turley

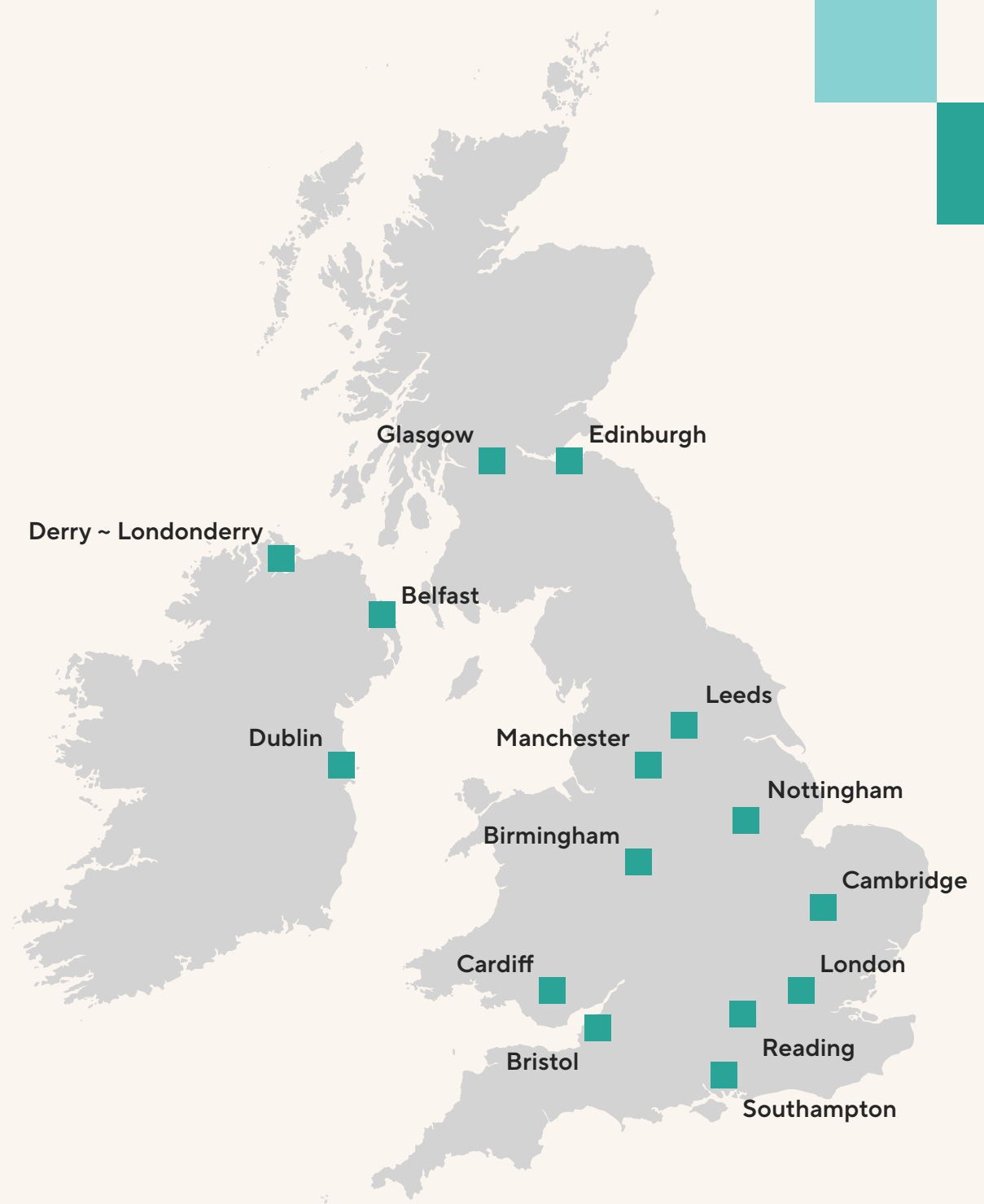
**Trusted independent advisors  
with restless ambition to shape  
a more sustainable future.**

We work collaboratively with our clients to deliver places and communities that thrive.

We are rooted in the places we work through social and business connections.

Our people invest in positive relationships with local authorities, decision makers, communities and co-professionals across the UK and Ireland.

Our national experience is complemented by our local knowledge and networks.



# Our services

We offer expert advisory services for the built environment and beyond.

Combining professional expertise with in-depth market knowledge we work with clients to deliver thriving places and communities across all sectors.

We bring deep thinking; smart strategy; and expert delivery.



Design

Planning

Economics

EIA

Strategic  
Communications

Expert Witness

Heritage,  
Townscape  
and Landscape

Sustainability  
and ESG

# Our offer

We bring a distinctive offer:



## Strategic Thinking

We take time to understand our client's corporate objectives and drivers for their project, developing robust consenting strategies from the outset that are bespoke to specific objectives and challenges. Our advice is based upon significant experience of delivering the most challenging consents.



## Innovation

Our collective experience allows us to bring innovative thinking to net zero projects, whilst working within the parameters of the relevant consenting regime.



## Rigour

Net zero projects demand a rigorous approach to scheme design and technical assessment, in order to achieve the necessary consent. Through our experience and Senior Leadership, we proactively identify opportunities and manage risk.



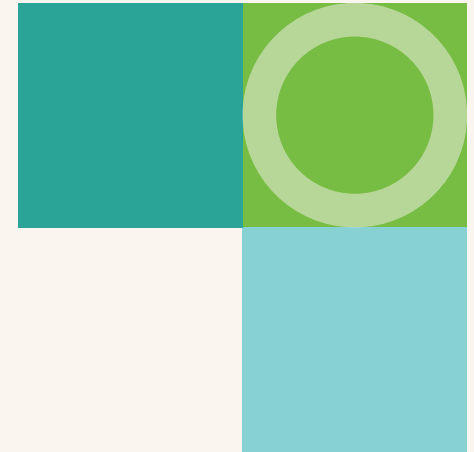
## Specialists

We are committed to delivering professional excellence, seeking to influence the rapidly evolving policy context and setting the agenda.



## Collaboration

Complex capital projects can take many years and require the strongest of relationships. We pride ourselves on being trusted advisors who you can rely on.





# Our expertise in delivering Net Zero Infrastructure

As independent advisors we have an extensive track record in securing relevant consents for Net Zero Infrastructure projects of scale and significance across the UK and Ireland.

Our UK and Ireland-wide presence allows us to align our expertise and experience to the particular requirements of an individual project.

We are not constrained by geography; we work flexibly to ensure that the best team is deployed to each project.

Our experience tells us that there are six interconnected services which lie at the core of successful infrastructure proposals:

- **Planning:** Effective consenting strategy with support from key technical disciplines.
  - **EIA:** Environmental leadership and full integration with design and permitting process.
  - **Strategic Communications:** Effective engagement with consultees, politicians and communities, together with shaping locally responsive community benefits.
  - **Sustainability and Energy Security:** Clearly articulating the benefits to the climate emergency and quantifying the greenhouse gas savings.
  - **Heritage and Townscape:** Appraisal of heritage and landscape context to inform project design evolution and to assess the potential impact of proposals on relevant receptors.
  - **Economics:** Provide robust economic and social evidence to articulate considerable positive economic and social benefits generated by a project, together with insight-led approach to community benefit which assesses socio-economic and demographic profiles.
- We have found this approach, integrated at the core and blended with our other services as and when appropriate, to be successful and effective across all development sectors, regardless of how new or controversial the project. Our proposition is distinct and unique in the market place.



# Selected experience

Across all disciplines we have an established track record in successfully promoting energy infrastructure projects, as well as a number of associated technologies, through the various consenting regimes throughout the UK and Ireland.

The below projects, which are presented in greater detail across the following pages and plotted on adjacent map represent a snapshot of our project experience.

## Onshore Wind

1. Scout Moor II Wind Farm
2. Nant Mithil Energy Park
3. Slieve Kirk Wind Park

## Offshore Wind

4. Project Erebus
5. Arklow Bank Wind Park 2

## Solar

6. Hawthorn Pit Solar Farm
7. Copper Bottom Solar Farm
8. Solar development at Home Farm, Hursley near Winchester

## Energy Storage

9. Battery Energy Storage System, Solihull
10. Battery Energy Storage System, Ayr

## Energy Recovery

11. Protos Resource Recovery Park
12. Energy Recovery Facility and Waste Water Transfer Station, Peterborough

## Energy Transmission and Distribution

13. Thorpe Marsh Gas Pipeline, Yorkshire
14. Towy Teifi Grid Connection
15. Hynet CO<sub>2</sub> Pipeline
16. HyLine Cymru and National Hydrogen Infrastructure

## Industrial Decarbonisation

17. Carbon Capture Utilisation and Storage, Breedon Group
18. Carbon Capture Facility, Protos, Cheshire
19. Electric Arc Furnace, Port Talbot

## Hydrogen Production

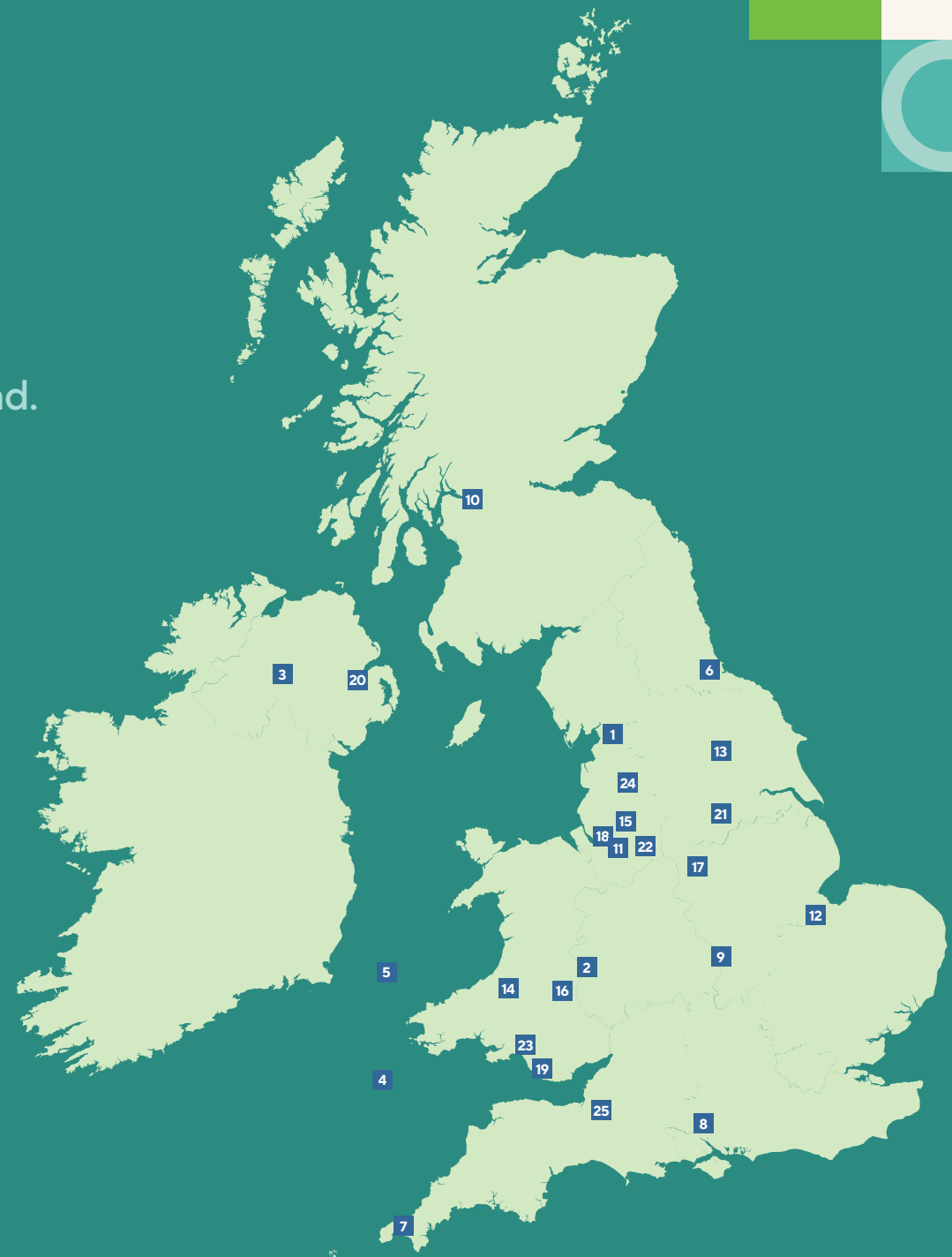
20. Long Mountain Wind Farm Hydrogen Production Plant

## Sustainable Transportation Fuels

21. SAF Innovation Centre, Sheffield
22. SAF Production Facility, Stanlow, Cheshire
23. SAF Production Facility, Port Talbot (Project Dragon)

## District Heat Networks

24. Manchester Civic Quarter Energy Centre and District Heat Network
25. Bristol's District Heat Network





# Scout Moor II Wind Farm

## Leading the way in onshore wind in England

### Client

Cubico Sustainable  
Investments

### LPA

Rossendale and Rochdale  
Borough Councils  
(cross boundary)

### Status

Planning application  
submitted

### Services

Planning, EIA, Heritage &  
Townscape, Economics,  
Sustainability and ESG,  
Design

We are commissioned as Planning and EIA leads in connection with an application for full planning permission for Scout Moor II, a 99.9MW onshore wind farm on moorland spanning the administrative boundaries of Rossendale and Rochdale in the South Pennines. The proposal is the first commercial scale onshore wind farm to be brought forward in England since the removal of the de-facto ban on onshore wind.

The wind farm will comprise up to 17 turbines of 180m in height, alongside ancillary infrastructure, comprehensive peat moorland restoration strategy and a package of significant socio-economic benefits including a community wealth fund. We have led pre-application negotiations with the local authorities and a range of statutory and non-statutory consultees, including Natural England, as well as supporting an extensive public consultation process, managing EIA Scoping and inputting into the design iteration of the scheme. We are now leading on negotiation of the application as it proceeds through the determination process.

Our Design team have co-ordinated the production of an Outdoor Access Enhancement & Management, setting out how public access will be maintained during construction, as well as detailing the measures which will be embedded within the scheme to enhance public access and recreation during operation. Our Heritage, Economics and Sustainability & ESG teams have also provided specialist inputs into the planning, EIA and design process.

01





# Nant Mithil Energy Park

Leading a nationally significant wind farm development in Wales

02



We have been appointed by Bute Energy as the Planning and Consenting lead in respect of the development of an onshore wind farm in Powys, with the potential to generate 205MW of clean energy.

This is a project of national significance that will be determined by Welsh Ministers and is being progressed via the Development of National Significance (DNS) process. Our role is to drive the project forward to the submission and successful negotiation of the DNS application. This involves (inter alia):

- Advising on programme and consenting risks, presenting solutions to challenges throughout the process;
- Providing clear direction and maintaining a positive working dynamic with the project team and client to achieve key milestones;
- and leading complex negotiations with key stakeholders (such as Powys County Council and Planning and Environment Decisions Wales) to ensure areas of agreement and common ground are maximised.

Our Economics team is also instructed to optimise and report upon the socio-economic benefits of the development.

Our ongoing involvement on the project has led to further opportunities, as we are advising Bute in the context of its wider infrastructure delivery aspirations. We form part of Bute's Welsh based supply chain and as part of our appointment have committed to deliver a social value package that will contribute to the tangible outcomes and benefits of these projects.

## **Client**

Bute Energy

## **LPA**

Powys County Council /  
Welsh Government

## **Status**

Consented and under  
construction

## **Services**

Planning, Economics

# Slieve Kirk Wind Park

Optimising energy output from an approved wind farm in Northern Ireland and ensuring timely planning decisions

**Client**

SSE Renewables

**LPA**

Derry City & Strabane  
District Council

**Status**

Consented and  
operational

**Services**

Planning

Slieve Kirk Wind Park is the largest wind farm in Northern Ireland. It can generate 73.5MW of clean, green energy to power almost 65,000 homes. We secured planning permissions to alter the previously approved Glenconway wind farm permission for eight turbines and discharge commencement conditions, meeting strict SSE commissioning programme deadlines.

We also secured planning permission for a four-turbine extension to Slieve Kirk (Slieve Kirk 2; SK2) in March 2015, in the final days before the transfer of the majority of planning powers to local authorities, which represented a hard planning deadline.

As a 'plug and play' type project, SK2 had the potential to deliver an additional 11.5MW towards renewable energy targets as there was no need for any additional infrastructure work. SK2 was SSE'S #1 NI investment priority at that time since few, if any, wind projects in the planning system could deliver energy to the grid as quickly as SK2.

We procured a full EIA team, scoped and managed the EIA process, led engagement with DoE Planning (up to Chief Planner level, in the context of SSE's wider programme at that time, including Bessy Bell 2&3, Tievenameenta, Slieve Divena 2, Binnawooda, Dunaree Hill) and negotiated conditions.

03



# Arklow Bank Wind Park 2

Offshore wind farm located 6-15km off the coast

## Client

Sure Partners Ltd  
– Subsidiary of SSE

## LPA

An Bord Pleanála

## Status

Planning application  
submitted / Ongoing

## Services

Planning, Creative Design

We are providing expert Planning services to SSE in respect of a Section 291 maritime area planning consent application for the Arklow Bank Wind Park 2 offshore infrastructure. We supported SSE's project team during pre-application discussions with An Bord Pleanála and provided advice in respect of planning related queries and the Board's procedural guidance.

We also led on the project website, which was required to support the public consultation process for the application by making publicly available each document associated with the planning application.

A valid S291 maritime area planning consent application was submitted to An Bord Pleanála in June 2024. Once operational, the offshore wind farm will be capable of producing enough renewable energy to power around 850,000 homes each year and the project is expected to deliver an overall national economic benefit of up to €800 million while supporting around 2,300 direct and indirect jobs throughout its delivery and operational lifetime.





# Hawthorn Pit Solar Farm

Imperative to tackle climate change and significant benefits of solar energy situated in the North East of England

06



Aura Power develops renewable energy projects across the globe, helping communities benefit from the transition to renewables. We provided Planning and LVIA services in respect of a number of solar projects, including in respect of a planning appeal following refusal of an application for a 49.9MW solar farm development at Murton, County Durham. This appeal was allowed and planning permission granted. We are also co-ordinating planning applications for further solar farm development in various locations across England, as well as assisting Aura with other planning appeals.

**Client**

Aura Power  
Developments Ltd

**LPA**

Durham County Council

**Status**

Ongoing

**Services**

Planning, Landscape  
& VIA



# Copper Bottom Solar Farm, Cornwall

## Increasing the supply of clean power in Cornwall

### Client

Aura Power  
Developments Ltd

### LPA

Cornwall Council

### Status

Planning permission  
granted

### Services

Planning

We provided Planning services, including acting as an Expert Witness at the appeal hearing. The appeal was allowed as outdated policies in the Cornwall Local Plan conflicted with current national policy. The NPPF encourages using poorer-quality land, while the 2024 WMS prioritises Best and Most Versatile (BMV) agricultural land. A full award of costs was secured. Planning permission was granted for a 30MW solar farm near Carnhell Green, Camborne, with direct grid access via existing power lines. It will power over 8,000 homes, cut 19,000+ tonnes of CO<sub>2</sub> annually and boost biodiversity.

07





# Solar development at Home Farm, Hursley near Winchester

08



## Planning permission for a solar development in Hampshire to serve IBM

We supported Xela Energy with a multi-service advisory team on a private-wire solar development in Hursley for IBM. A thorough assessment identified a location with minimal landscape and heritage impact, which was refined through formal pre-application engagement and confirmed as non EIA development. Early political and community research, alongside sentiment tracking, shaped our engagement strategy and enhanced project positioning.

This proactive approach gained strong support from City Councillors and key stakeholders. Planning permission was granted under delegated officer authority, bolstered by minimal key consultee concern, and considerable backing from residents and interested parties. Once operational, the facility is expected to generate nearly 5 million kWh of electricity annually translating to a lifetime saving of approximately 46,000 tonnes of CO<sub>2</sub> or the equivalent impact of planting around 60,000 trees. The greenhouse gas reduction alone matches the effect of removing approximately 580 cars from UK roads.

**Client**

Xela Energy

**LPA**

Winchester City Council

**Status**

Planning permission granted for a temporary period of 40 years under delegated officer authority

**Services**

Planning, Heritage, Townscape and Landscape, Economics, Sustainability and ESG, Strategic Communications, EIA

# Battery Energy Storage System, Solihull

Contributing to national energy security in England

## Client

Arlington Energy

## LPA

Solihull Borough Council

## Status

Subject to appeal

## Services

Planning, EIA, Landscape & VIA, Sustainability and ESG, Design

We were appointed to co-ordinate the preparation and submission of a planning application for a 100MW BESS within the Green Belt, leading a multi-disciplinary consultancy team. Our role has included preparing the Planning Statement and Alternative Site Assessment, which explains the need for and benefits of the proposed development and demonstrates the absence of alternative land capable of accommodating the project outside the Green Belt.

We have also been responsible for liaising with the Local Planning Authority (Solihull MBC) and providing specialist support to the scheme design process (LVIA and landscape design). In addition, we calculated the CHG emission savings which would result from implementation and operation of the project.

09





# Battery Energy Storage System, Ayr

## Nationally Significant BESS in Scotland

10



We are appointed to co-ordinate the preparation and submission of an application for Section 36 consent (Electricity Act 1989) for a 500MW BESS in Ayr, leading a multi-disciplinary team. Our role has involved liaison with the Energy Consent Unit / LPA, political and stakeholder engagement, calculation of the GHG emission savings and the beneficial economic impact. We are also preparing the supporting Planning Statement which explains the need for and benefits of the proposed development. In addition, we have provided specialist support to the iterative design process (LVIA and Landscape Design).

### Client

New Energy Partnership

### LPA

South Ayrshire Council /  
Energy Consent Unit

### Status

Consented

### Services

Planning, EIA,  
Sustainability and ESG,  
Economics, Design,  
Landscape & VIA,  
Heritage, Strategic  
Communications



# Protos Resource Recovery Park

Creating an energy and innovation hub in the North West of England

## Client

Peel NRE

## LPA

Cheshire West and Chester Council

## Status

Ongoing

## Services

Planning, EIA, Economics, Sustainability and ESG, TVIA, Heritage

Protos is a resource recovery, processing, management and energy generation park being developed in Ellesmere Port, Cheshire. Protos, once fully developed, will extend to over 130 ha and comprise a biomass power station, a 49.9MW energy recovery facility, a timber recycling facility, a Plastics Recycling Park, and a broad range of other waste processing and management developments. It will be the largest development of its kind in the UK.

Our role has been to navigate successfully the planning regime for what has been a very contentious proposal. Protos is highly technical and complex, addressing issues of highway capacity, and impacts on biodiversity, air quality, landscape, sustainability and economic impact. Our role has included preparing the planning strategy, negotiation with the Local Planning Authority and other key stakeholders, and co-ordinating a multi-disciplinary team in preparation of the planning applications and EIA.

We have secured the necessary consents to enable development to proceed and it is now recognised as one of the largest transformational projects in the north of England.

We continue to work with the client, Peel NRE, to enable Protos to become a leading site to help facilitate the decarbonisation of industries in the surrounding area. The aspiration is to create a hub of energy, innovation and industry, with unrivalled links to research, facilities and infrastructure.



# Energy Recovery Facility and Waste Transfer Station, Peterborough

12



## A new energy from waste facility in England

Our Planning team led the planning process on the application for an Energy Recovery Facility (8.4MW) and Waste Transfer Station, providing strategic advice at the beginning of the project and subsequently managing the entire planning application. Our role included co-ordination of the planning application and EIA, working alongside a multi-disciplinary team of consultants and the client. We also led negotiations with the LPA and other stakeholders, successfully securing planning permission. The facility opened in March 2016 and is contributing to Peterborough's aspiration to become the UK's Environment Capital and eventually achieve zero landfill.

**Client**

Viridor Waste Management

**LPA**

Peterborough Borough Council

**Status**

Complete

**Services**

Planning, EIA



# Thorpe Marsh Gas Pipeline, Yorkshire

The second natural gas pipeline in the UK to secure permission under the 2008 Planning Act situated in Northern England

**Client**

Thorpe Marsh Power Ltd

**LPA**

Planning Inspectorate

**Status**

Complete

**Services**

Planning, Strategic Communications

The Thorpe Marsh pipeline was the second natural gas pipeline in the UK to secure a DCO under the Planning Act 2008.

Our role included co-ordination of a multi-disciplinary technical team in the preparation of the DCO application. We also co-ordinated the preparation of hearing statements, responses to inspector's questions and responses to third party representations during the examination. We attended the Examination Hearings, presenting expert planning consultancy inputs where required.

Our Strategic Communications team managed the stakeholder engagement process. This included formal and informal consultation with four host authorities and the engagement of over 20,000 residents alongside other statutory and non-statutory stakeholders.

The Development Consent Order was approved and subsequently issued.



# Towy Teifi Grid Connection

Connecting energy parks in Mid-Wales to the national grid

14



Green GEN Cymru (GGC) is an Independent Distribution Network Operator (IDNO) licensed to deliver a 132kV network connecting energy sources to the National Grid. The Towy Teifi Line, a 52km powerline, is a Significant Infrastructural Project linking multiple Energy Parks in Mid-Wales to the grid.

As GGC's Planning & Consenting Lead, we provide strategic planning advice, oversee design evolution, and prepare the Infrastructure Consent (IC) application for the Welsh Government. The route spans two local authorities, requiring engagement with stakeholders and statutory consultees such as Cadw, NRW and County Councils to minimise objections.

In Q1 2025, Non-Statutory Consultation #2 took place, with ongoing engagement ahead of Pre-Application Consultation (2025) and submission (2026). We led the Consenting Strategy, addressing implications of the new Infrastructure Consenting regime. Our involvement has secured further Planning & Consenting Lead appointments for GGC projects, and we have developed Consenting Strategies considering IWA2024's impact.

## **Client**

Green Gen Cymru

## **LPA**

Carmarthenshire County Council and Ceredigion County Council

## **Status**

Pre-application

## **Services**

Planning, Economics



# HyNet CO<sub>2</sub> Pipeline

## Emerging pipeline scheme in England and Wales

### Client

Peel NRE

### LPA

Cheshire West and  
Chester Council / PINS

### Status

Development Consent  
Order (DCO) issued and  
under construction

### Services

Planning, EIA

HyNet will be one of the first decarbonisation projects to be delivered in the UK. It will comprise a hydrogen production plant and pipeline to replace fossil fuels as a source of energy for industries in the North West. It will also comprise carbon dioxide capture, transportation and storage (CCUS) infrastructure. This component of HyNet has just been granted DCO. The pipeline extends from Cheshire to North Wales, travelling south of Protos Resource Recovery Park through Peel NRE's land holdings. Above ground installations are also proposed on land owned by Peel NRE.

Our role involved advising Peel NRE on the implications of the project for the future development potential of its land interests, liaising with the applicant team to secure appropriate amendments and making formal representations to the DCO process where required.

We worked closely with the consultant team and pre-FEED engineering consultants to understand the emerging scheme and its environmental and engineering constraints. Our role has also involved reviewing the DCO documentation and responding to the examining authority's questions. We have also liaised with the appointed legal team to prepare necessary agreements between Peel NRE and the applicants.

15



# HyLine Cymru and National Hydrogen Infrastructure

16



## Establishing the planning and consenting strategy for the delivery of hydrogen pipeline infrastructure across Wales and England

Working in collaboration with BDB Pitmans, we prepared a Planning and Legal Delivery Strategy for the development of hydrogen infrastructure across Wales and England, including a cross-border scenario. Using WWU's HyLine Cymru (South Wales) as a case study, it set out the relevant policy and legislation and addressed the key development considerations to bring forward hydrogen infrastructure.

The strategy provides a pathway for network providers to develop hydrogen infrastructure within Wales, England or both, now and in the future. A Summary Strategy was prepared for WWU to share learnings with all network providers. By identifying opportunities to streamline planning and consenting, and robust methodologies to present project benefits, network providers can work collectively and innovatively to speed up delivery at a cross-country scale.

The strategy supports the timely delivery of hydrogen infrastructure, playing a key role in achieving net zero by 2050.

### **Client**

Green Gen Cymru

### **LPA**

Carmarthenshire County Council and Ceredigion County Council

### **Status**

Pre-application

### **Services**

Planning, Economics



# Breedon Group – Carbon Capture Utilisation and Storage

Transformational project within the  
Peak District, England

**Client**

Breedon Group

**LPA**

Peak District National  
Park Authority / Planning  
Inspectorate

**Status**

Pre-application

**Services**

Planning, EIA

We have been commissioned by the Breedon Group to assist them in preparing and submitting relevant planning / EIA documents in relation to a proposed carbon capture facility on land adjacent to their existing cement manufacturing facility in the Peak District. The proposed facility forms part of a wider and much larger project - known as the Peak Cluster - for which a Development Consent Order will be sought. The Peak Cluster project comprises a number of carbon capture plants on other manufacturing sites within the Peak District, which are to be connected to a new pipeline (>100km length) through which the captured carbon will be transported and ultimately stored in secure sites beneath the Irish Sea.





# Carbon Capture Facility, Protos ERF

First-of-its-kind carbon capture project situated in North West England

On behalf of a joint venture between Encyclis Limited and Biffa Waste Services Limited, we are supporting the development of a Carbon Capture Facility associated to the Protos energy from waste facility. The project has reached financial investment decision by UK Government and will be one of the first carbon capture facilities to export captured carbon to the wider HyNet carbon capture, transportation and storage project. Once operational, the facility will capture c.380,000 tonnes of CO<sub>2</sub> per annum, equivalent to taking 200,000 cars off the road. The project will be one of the first-of-its-kind to work through the Town and Country Planning Act process.

We were commissioned to co-ordinate a multi-disciplinary team in the preparation of the planning application and EIA including drainage, biodiversity, landscape and visual impact, climate change, noise and air quality. A bespoke consenting strategy has been prepared ensuring alignment between the planning and EIA workstreams.

The application received a unanimous resolution to grant full planning permission at planning committee in September 2024.

## Client

Encyclis Limited /  
Biffa Waste Services

## LPA

Cheshire West  
and Chester Council

## Status

Planning permission  
granted; under  
construction

## Services

Planning, EIA, Heritage,  
Sustainability and  
ESG, Landscape & VIA,  
Economics, Strategic  
Communications



# Electric Arc Furnace, Port Talbot

Transformative project marking a major step towards sustainable steelmaking in Port Talbot, Wales

## Client

Tata Steel UK Ltd

## LPA

Neath Port Talbot County Borough Council

## Status

Approval

## Services

Planning, Strategic Communications, Economics, Design, Sustainability

On behalf of Tata Steel UK, we have secured approval for the transformative Electric Arc Furnace (EAF) project in Port Talbot, marking a major step towards sustainable steelmaking. Providing Planning, Strategic communications, Design, Economics and Sustainability services, we played a key role in shaping this milestone investment.

Backed by £500 million from the UK Government, Tata Steel UK's £1.25 billion initiative will preserve 5,000 jobs across the UK and slash on-site CO<sub>2</sub> emissions by 90%, equating to 1.5% of the UK's total direct emissions, emphasising its significance, ensuring high-quality steel production and securing the future of UK steelmaking.

The project includes an EAF, two new Ladle Metallurgy Furnaces and essential infrastructure, replacing ageing facilities. Using electricity to melt UK-sourced scrap steel, it hugely reduces reliance on imported iron ore and coal, further enhancing sustainability.

Business and Trade Secretary Jonathan Reynolds hailed this as a turning point, giving Welsh steelmaking the stability needed for future growth. Work begins in summer 2025, with EAF commissioning set for late 2027 / early 2028.



# Long Mountain Wind Farm Hydrogen Production Plant

Hydrogen production compound for Long Mountain Wind Farm site in Northern Ireland

**Client**

Energia Renewables

**LPA**

Causeway Coast and  
Glens Borough Council

**Status**

Consented and under  
construction

**Services**

Planning, Strategic  
Communications

The proposed hydrogen production compound was a pilot proposal for North Ireland and formed part of an EU Funded research project in to the generation of alternative energy fuels from renewable energy.

Our role involved leading pre-application discussions with the local authority and other key stakeholders including the local community.

We also prepared and co-ordinated the planning application including management of a technical team addressing a broad range of environmental matters including noise, air quality, drainage, traffic and landscape impact.

Following submission of the application we monitored its progress and liaised with the local authority's planning and environmental team in the negotiation of noise conditions.



# SAF Innovation Centre, Sheffield

A UK first for sustainable aviation fuel research & development  
situated in South Yorkshire, England

21



On behalf of the University of Sheffield, we secured Reserved Matters Approval for the construction of the Sustainable Aviation Fuels Innovation Centre (SAF-IC), a bespoke research centre for the development and testing of sustainable aviation fuels. Based at the University of Sheffield Innovation District and forming part of the university's Energy Institute, SAF-IC aims to enable the development of practical solutions to the challenge of making jet travel more sustainable.

SAF-IC will also operate as the UK's first Sustainable Aviation Fuel Clearing House – a central hub to co-ordinate the testing and certification of new sustainable aviation fuels.

We provided planning consultancy services throughout the initial concept design of the scheme, engaging with Sheffield City Council to obtain pre-application advice. We co-ordinated the preparation and submission of an application for Reserved Matters approval, presenting the strategic need for and importance of the scheme. We managed negotiations with the council and statutory consultees during determination of the application, to secure approval. We subsequently supported the project team during the construction phase of the development, advising on the discharge of planning conditions and non-material amendments.

## Client

University of Sheffield

## LPA

Sheffield City Council

## Status

Complete and operational

## Services

Planning

# SAF Production Facility Stanlow, Cheshire

## Connecting Manchester Airport, England to sustainable jet fuel

### Client

Breedon Group

### LPA

Peak District National  
Park Authority / Planning  
Inspectorate

### Status

Pre-application

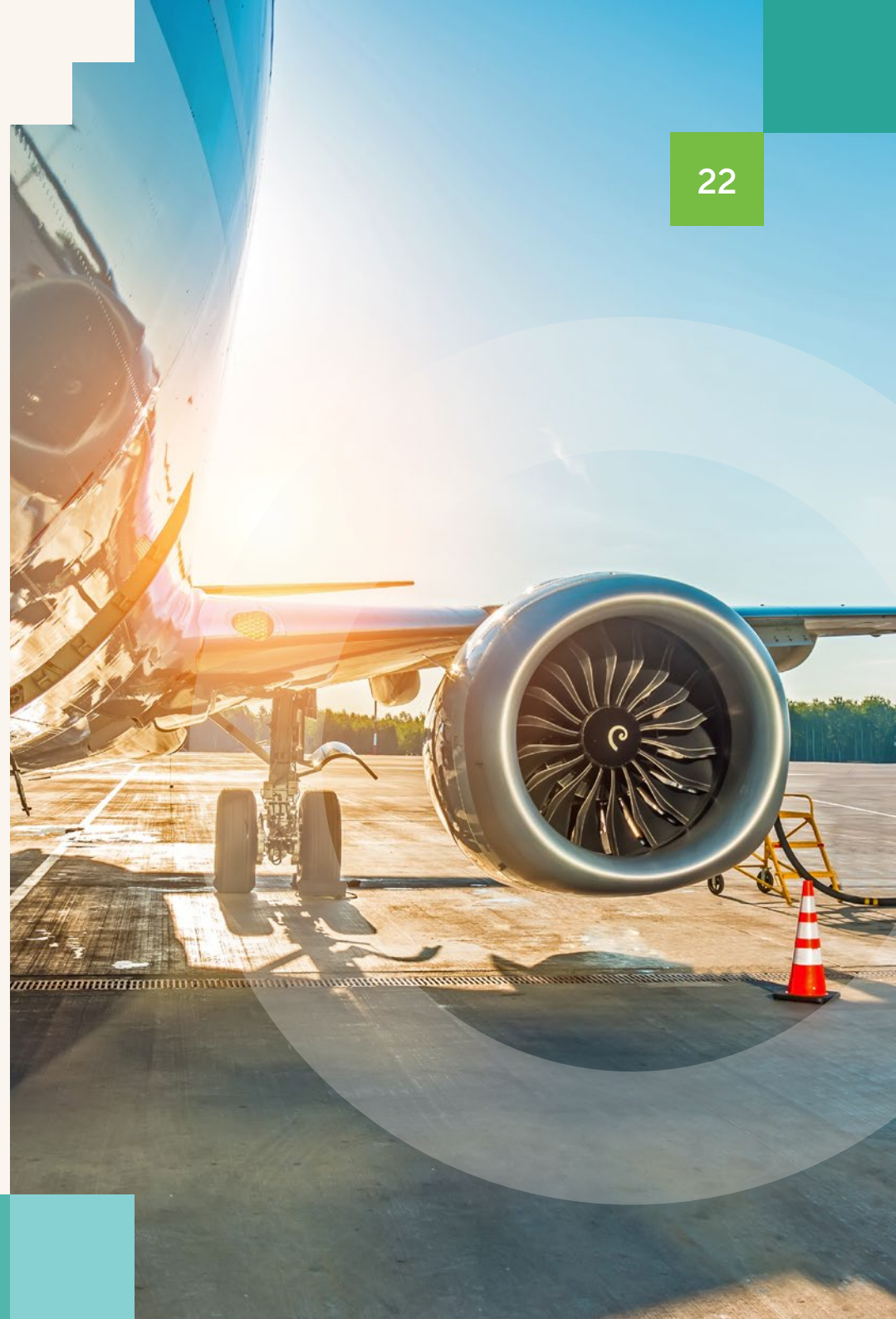
### Services

Planning, EIA

We are co-ordinating the preparation of a planning application for the development of a sustainable aviation fuel production facility within the Stanlow Oil Refinery on behalf of Fulcrum Bioenergy.

The feedstock for the proposed development will be household waste processed into refuse derived fuel (RDF) and then converted to a synthetic paraffinic kerosene (SPK) through a process of gasification and fisher-tropsch. The SPK will be blended with conventional jet fuel to produce the SAF. The SAF will be transported to Manchester Airport by an existing pipeline (the first airport in the world to have such a connection) and to other UK airports via the UK Oil Pipeline.

Our role has involved liaison with the Local Planning Authority and associated stakeholders to explain the need for and benefits of the proposed development, its alignment with national planning and energy policy and the strategy for delivering a net gain to biodiversity. We have also prepared a Planning Statement in support of the application which similarly sets out the case for permission being granted. Our Sustainability and ESG and Economics teams completed an assessment of the Green House Gas emission savings and socio-economic benefits respectively.





# Project Dragon, Phoenix Wharf

Planning, project management and  
Environmental Impact Assessment for a  
new alcohol-to-jet fuel production facility  
in South Wales

**Client**

LanzaTech UK Ltd

**LPA**

Neath Port Talbot County  
Borough Council

**Status**

Resolution to grant  
approval

**Services**

Planning, Strategic  
Communications, EIA,  
Landscape and VIA,  
Economics, Sustainability  
and ESG

The team is working closely with officers at Neath Port Talbot County Borough Council and Natural Resources Wales. The Pre-Application Consultation (PAC) follows a period of early consultation on the plans which was held in May and June 2023. We are leading on Planning, Project Management and Environmental Impact Assessment for LanzaTech.

The facility, which would be located at Crown Wharf in Port Talbot, would produce about 100 million litres of sustainable aviation fuel per year, around 10% of the sustainable aviation fuel that the UK plans to use by 2030. Sustainable aviation fuel reduces the production of greenhouse gases by more than 70%. This is expected to create over 150 full-time jobs, including 85 jobs on-site alongside further employment in the supply chain.

The c.£350 million project is being delivered in conjunction with the South Wales Industrial Cluster.

The project will deliver a strategic investment in a new alcohol-to-jet fuel production facility in Port Talbot.

A planning application was submitted in November 2023 and a resolution to grant approval was secured at committee in March 2024.

# Manchester Civic Quarter Energy Centre & District Heat Network

Implementing infrastructure of national significance in Manchester, England

## Client

Vital Energi

## LPA

Manchester City Council

## Status

Complete and operational

## Services

Planning, EIA, Strategic Communications, Heritage, Economics

We have successfully promoted a number of district heat network projects in Oxford, Leeds and Manchester.

The Manchester Civic Quarter Heat Network comprises a 27MW CHP Energy Centre and associated network infrastructure close to a number of listed buildings and conservation areas.

Our role involved providing strategic planning advice to ensure that the design of the energy centre met the client's operational requirements, whilst also providing a high-quality and innovative design solution on a highly visible, gateway site.

The design solution includes the incorporation of a unique architectural 'wrap' to the emission towers and a bespoke undulating tiled façade to the principal elevation of the energy centre.

We also co-ordinated the preparation of the planning application and Environmental Impact Assessment providing specialist services in respect of heritage, sustainability and socio-economic benefit analysis.

Our Strategic Communications team delivered a comprehensive programme of stakeholder engagement.





# Bristol's District Heat Network (Bedminster)

25



## A new district heat network serving Bristol's regeneration area in the South West of England

We were appointed by Vattenfall to assist in the delivery of a new district heat network that will serve the Bedminster Green regeneration area. We led on the co-ordination and preparation of a planning application for this linear scheme, involving close liaison with the project team and ongoing advice to the client regarding submission requirements.

A key part of our role was ensuring planning conditions were kept to a minimum to enable the development to commence within the tight delivery programme. This involved negotiations with the planning officer and clarity on the construction method during the determination period to reduce the number of planning conditions attached to the permission. Furthermore, we successfully negotiated longer construction hours.

Full planning permission was granted within the statutory timescales and with no pre-commencement conditions, enabling the immediate commencement of the development. In addition, we successfully negotiated longer construction hours to ensure the heat network was aligned with the delivery of the wider regeneration development which will be served by the heat network itself.

**Client**

Vattenfall

**LPA**

Bristol City Council

**Status**

Complete

**Services**

Planning

# Our deliverables across the development lifecycle



## Site identification & consenting strategy

- GIS capability
- Site appraisals including Planning, Heritage and LVIA
- Policy reviews
- Review of planning history
- Consenting strategy



## Consenting

- LPA & stakeholder negotiation
- Strategic advice
- Committee presentation
- Corporate affairs



## Legal Process

- Expert Witness
- Planning appeals
- DCO
- Compulsory purchase



## Political and community advocacy

- Stakeholder context and sentiment tracking
- Bespoke political stakeholder and community engagement strategies
- Pre-application meetings
- Strong project positioning and narrative
- Creatively designed collateral
- Press and media management and monitoring
- Locally responsive community benefit strategies
- Opposition risk management and targeted support generation



## Application preparation

- Project management and application co-ordination
- EIA Screening / Scoping / Environmental Statements
- Planning statements
- Landscape and Visual Impact Assessment (LVIA) and heritage assessments
- Community Benefit Statements
- Sustainability Statements
- Design & Access Statements
- Economic Impact Assessments
- GHG Assessments
- BREEAM
- Public Access & Recreation Strategies
- Landscape & Planting Schemes



## Implementation

- Planning condition discharge
- Corporate affairs
- Section 106 negotiation
- Amending planning permissions / consents to reflect changes to design or client requirements
- Post consent communications with communities, politicians and local groups



## Operations

- Public relations and ongoing advisory, including on Community Benefit Strategy
- Ongoing community liaison through operations



# Securing consent across the development lifecycle

## Different types of consent require bespoke approaches for success.

As trusted advisors to our clients we proactively integrate relevant experience from across our service disciplines to effectively navigate each stage of the development lifecycle, providing expert deliverables that secure the necessary consents for varied net zero projects.

Through our cross-service expertise, we actively access the pertinent knowledge from our disciplines to deliver tailored strategies for every project.

We support each stage of the lifecycle with a range of expert deliverables to positively progress developments towards consent.

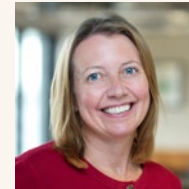
Through our expertise in net zero projects, we can successfully secure a varied range of different consent types.





Design  
Economics  
EIA  
Expert Witness  
Heritage, Townscape and Landscape  
Planning  
Strategic Communications  
Sustainability and ESG

# Contact



---

**Nicola Riley**

Senior Director, Net Zero Infrastructure  
[nicola.riley@turley.co.uk](mailto:nicola.riley@turley.co.uk)

For advice or enquiries, please reach out to Nicola Riley who will connect you with our local experts across our services.